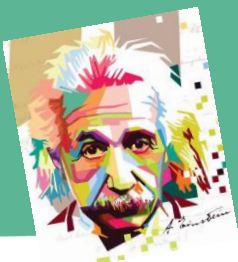


EXCHANGE STUDENTS INFORMATION SHEET

Contact Information

Name of University	The Hebrew University of Jerusalem
Website of University	University / Rothberg International School (RIS)
Name of Office dealing with the Exchange Program	The International Office
Head of the International Office	Ms. Jane Turner
Website of Office dealing with the Exchange Program	The International Office
Postal Address	Mount Scopus Jerusalem 9190501 ISRAEL
Phone	+972-(0)2-5881032; +972-(0)2-5880417; +972(0)-2-5881914
Fax	+972-(0)2-5883021
Exchange Coordinators	Incoming students: Ms. Ayala Feinmesser-Mizrahi Outgoing students (European partners): Ms. Liat Gabay Outgoing students (Non-European partners): Ms. Shachar Kessler
Administrative Structure	<p>The Rothberg International School (RIS), located on Mount Scopus campus, is an academic and administrative entity within the Hebrew University. RIS serves as a hub for numerous international programs, degrees and courses.</p> <p>RIS provides administrative and academic support for incoming undergraduate and graduate exchange students, including pre-arrival assistance and arrival services.</p>



EXCHANGE STUDENTS INFORMATION SHEET

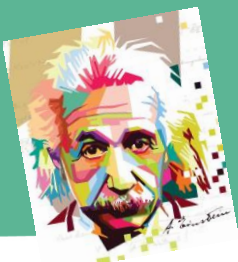
General Information

The Hebrew University of Jerusalem, Israel's first university, is a multidisciplinary institution of higher learning and research where intellectual pioneering, cutting-edge discovery and a passion for learning flourish. It is a center of international reputation, with ties extending to and from the worldwide scientific and academic community and where teaching and research interact to create innovative approaches that ensure the broadest of educations for its students.

Ranked among the world's leading universities, at the Hebrew University Israelis of all backgrounds receive a university education where excellence is emphasized; where advanced, postgraduate study and research are encouraged; and where special programs and conferences attract students and academics from around the world. At its core, the Hebrew University's mission is to develop cutting-edge research, to educate future leaders in all walks of life, and to nurture future generations of outstanding scientists and scholars in all fields of learning.

Application Information

Registration and Application Deadlines	<p><u>Nomination Deadline:</u> 1 month prior to application deadline. Nominations should be sent to the Exchange Coordinator :</p> <p>Ms. Ayala Feinmesser-Mizrahi</p> <p><u>Application Deadlines:</u></p> <p>Autumn and Year - Undergraduate – April 15th, Graduates: May 15th Spring - Undergraduate - November 30th Graduates : December 31st</p>
Application Information	<p>Undergraduate Program / Graduate Program</p>
On-line application link	<p>Undergraduate students Graduate students</p>
Entry and Language Requirements	<p>GPA of 3.0 (Undergraduates) / 3.2 (Graduates)</p>

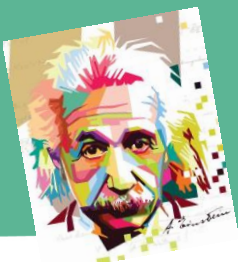


EXCHANGE STUDENTS INFORMATION SHEET

	<p>English proficiency requirements:</p> <ol style="list-style-type: none"> 1) TOEFL 80 or IELTS 6 Official scores 2) Language proficiency certificates issued by University Language Centers – B2 level. 3) DAAD - <u>only</u> if signed and stamped by the University Language Center. 4) Cambridge English Exams if the C1 level is specifically stated. <p>Students who have completed degrees at universities in which the sole language of instruction is English are exempt from this requirement.</p> <p>**Students who wish to take courses taught in Hebrew in the faculty departments <u>should note that each course has different Hebrew language requirements</u> (ranging from level Gimel to level Heh)</p>
--	---

Semester Information

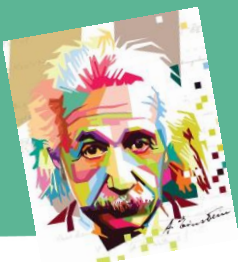
Semester system	Two
Semester dates (including the exam period)	October- February / March - July
Academic calendar	<p>RIS Undergraduate / RIS Graduate / University*</p> <p>Please note that there is a difference in the academic calendar of RIS Undergraduate program and the University academic calendar. Undergraduate students should take into consideration that, if they wish to take courses both at RIS and at faculties, their semester might be extended for an additional month.</p>



EXCHANGE STUDENTS INFORMATION SHEET

Course Information and Selection

Main language of instruction	Hebrew/English
Pre-semester language course for exchange students (and fees information)	There are pre-semester intense Hebrew courses "Ulpan" (extra fees)
Selection of graduate courses	Each request will be handled individually
Standard full time load	15-20 credits per semester (1 credit = 1 <u>semester</u> hour of frontal study).
Faculties and Program of Study	RIS Undergraduate / RIS Graduate / Faculties Graduate
Course list available to exchange students*	University faculty courses (English) University faculty courses (Hebrew) RIS Undergraduate (English) RIS Graduate (English) *We highly encourage exchange students to enroll in both courses taught in university faculties and RIS courses. https://international.huji.ac.il/book/exchange-programs
Course restrictions for incoming students	Participation in some courses requires approval from the department in which the student wishes to study. Certain courses have prerequisites . The Faculty of Social Sciences accepts exchange students to electives only.
Credits and work load	The normal workload for a full-time student is 40 HUJI credits per academic year*. Our credit calculation is based on frontal lecture hours in the semester. HUJI has not adopted the ECTS credits system, however, HUJI credits can be translated into ECTS as follows: 0.66 HUJI credits = 1 ECTS. (*Varies depending on the field of study)



EXCHANGE STUDENTS INFORMATION SHEET



האוניברסיטה העברית בירושלים
THE HEBREW UNIVERSITY OF JERUSALEM

Housing, Costs, Useful Information

On-campus housing offered by the University	Information here
Off Campus Accommodation	If looking for off campus private accommodation, Information here
Approximate living costs	Information here
Insurance	Information here . In case a student purchases insurance independently, s/he must submit the Health Insurance Waiver form.
Visa requirements	Information here
Useful websites	Pre- departure Information Information about Jerusalem