

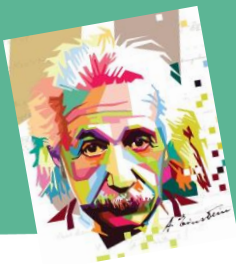
# EXCHANGE STUDENTS INFORMATION SHEET



האוניברסיטה העברית בירושלים  
THE HEBREW UNIVERSITY OF JERUSALEM

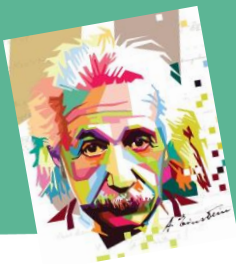
## Contact Information

Name of University	The Hebrew University of Jerusalem
Website of University	<a href="#">University</a> / <a href="#">Rothberg International School</a> (RIS)
Name of Office dealing with the Exchange Program	The International Office
Head of the International Office	<a href="#">Ms. Jane Turner</a>
Website of Office dealing with the Exchange Program	<a href="#">The International Office</a>
Postal Address	Mount Scopus Jerusalem 9190501 ISRAEL
Phone	+972-(0)2-5881032; +972-(0)2-5880417; +972(0)-2-5881914
Fax	+972-(0)2-5883021
Exchange Coordinators	Incoming students: <a href="#">Ms. Ayala Feinmesser-Mizrahi</a> Outgoing students (European partners): <a href="#">Ms. Liat Gabay</a> Outgoing students (Non-European partners): <a href="#">Ms. Shachar Kessler</a>
<b>COVID-19 UPDATES</b>	<b>Updates for International students</b> - <a href="https://overseas.huji.ac.il/corona-updates/">https://overseas.huji.ac.il/corona-updates/</a>  <b>General updates from the university management</b> <a href="https://vp-director.huji.ac.il/corona-updates">https://vp-director.huji.ac.il/corona-updates</a>  <b>Israel Ministry of Health updates</b> <a href="https://govextra.gov.il/ministry-of-health/corona/corona-virus-en/">https://govextra.gov.il/ministry-of-health/corona/corona-virus-en/</a>  Six ways Israel is managing the Coronavirus crises <a href="https://youtu.be/GYX86R_YB1g">https://youtu.be/GYX86R_YB1g</a>



# EXCHANGE STUDENTS INFORMATION SHEET

<b>Administrative Structure</b>	<p>The Rothberg International School (RIS), located on Mount Scopus campus, is an academic and administrative entity within the Hebrew University. RIS serves as a hub for numerous international programs, degrees and courses.</p> <p>RIS provides administrative and academic support for incoming undergraduate and graduate exchange students, including pre-arrival assistance and arrival services.</p>
<b>General Information</b>	<p>The Hebrew University of Jerusalem, Israel's first university, is a multidisciplinary institution of higher learning and research where intellectual pioneering, cutting-edge discovery and a passion for learning flourish. It is a center of international repute, with ties extending to and from the worldwide scientific and academic community and where teaching and research interact to create innovative approaches that ensure the broadest of educations for its students.</p> <p>Ranked among the world's leading universities, at the Hebrew University Israelis of all backgrounds receive a university education where excellence is emphasized; where advanced, postgraduate study and research are encouraged; and where special programs and conferences attract students and academics from around the world. At its core, the Hebrew University's mission is to develop cutting-edge research, to educate future leaders in all walks of life, and to nurture future generations of outstanding scientists and scholars in all fields of learning.</p>
<b>Student Support and Buddy System</b>	<p>The Office of Student Life offers a service package to all international students at The Hebrew University, which aims to help adjust to life on campus and in Jerusalem. The Office of Student Life provides practical support throughout the experience at the Hebrew University: Security and Safety orientations, office hours, 24\7 emergency phone number, and more. Besides support services, the office provides social and cultural extracurricular activities to enhance the time at the university. The many exciting events, tours, and activities</p>



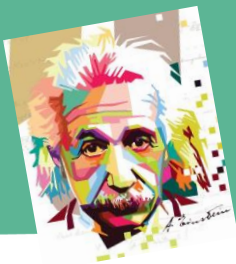
# EXCHANGE STUDENTS INFORMATION SHEET



	<p>complement the academic program and allow students to see Israel from new angles.</p> <p><b>H.U.B. (Hebrew University Buddies)</b> is a program run by The Office of Student Life, whose goal is to provide an opportunity for international and local students to connect through meaningful exchange. The program will match peers from varying backgrounds to foster a more diverse and heterogenous environment across The Hebrew University. H.U.B. aims to simultaneously give its local students a more 'international experience' by pairing them with students from abroad, while supplying it's international exchange students with the opportunity to experience Israel through a more authentic and informal lense.</p>
--	---

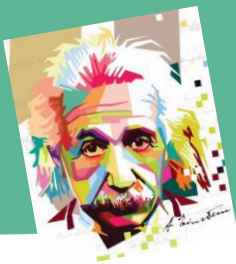
## Course Information and Selection

<b>Registration and Application Deadlines</b>	<p><b><u>Nomination Deadline:</u></b> 1 month prior to application deadline. Nominations should be sent to the Exchange Coordinator: <a href="#">Ms. Ayala Feinmesser-Mizrahi</a></p> <p><b><u>Application Deadlines:</u></b> Autumn and Year – Undergraduate: May 15<sup>th</sup> Graduate: May 15<sup>th</sup> Spring – Undergraduate: November 30<sup>th</sup> Graduate: December 31<sup>st</sup></p>
<b>Application Information</b>	<a href="#">Undergraduate Program</a> / <a href="#">Graduate Program</a>
<b>Online Application Link</b>	<a href="#">Undergraduate students</a> <a href="#">Graduate students</a>
<b>Entry and Language Requirements</b>	<p>GPA of 3.0 (Undergraduates) / 3.2 (Graduates)</p> <p><b><u>English proficiency requirements:</u></b></p> <p>1) TOEFL 80 or IELTS 6 <b>Official scores</b></p>



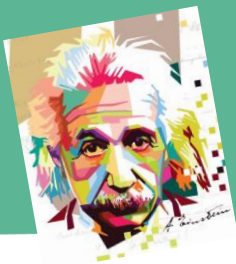
# EXCHANGE STUDENTS INFORMATION SHEET

	<p>2) Language proficiency certificates issued by University Language Centers – B2 level.</p> <p>3) DAAD - <u>only</u> if signed and stamped by the University Language Center.</p> <p>4) Cambridge English Exams if the C1 level is specifically stated.</p> <p>Students who have completed degrees at universities in which the sole language of instruction is English are exempt from this requirement.</p> <p><b>**Students who wish to take courses taught in Hebrew in the faculty departments <u>should note that each course has different Hebrew language requirements (ranging from level Gimel to level Heh)</u></b></p>
<p><b>Course Restrictions for Incoming Students</b></p>	<p>Participation in some courses requires approval from the department in which the student wishes to study. Certain courses have <b>prerequisites</b>.</p> <p>The Faculty of Social Sciences accepts exchange students to electives only.</p>
<p><b>Credits and Work Load</b></p>	<p>The normal workload for a full-time student is 40 HUJI credits per academic year*.</p> <p>Our credit calculation is based on frontal lecture hours in the semester.</p> <p>HUJI has not adopted the ECTS credits system, however, HUJI credits can be translated into ECTS as follows:</p> <p>0.66 HUJI credits = 1 ECTS.</p> <p>(*Varies depending on the field of study)</p>
<p><b>Main Language of Instruction</b></p>	<p>Hebrew/English</p>
<p><b>Pre-semester Language Course for Exchange Students (and Tuition Fees Information)</b></p>	<p>There are pre-semester intense <a href="#">Hebrew courses</a> "Ulpan" (extra fees)</p>



# EXCHANGE STUDENTS INFORMATION SHEET

<b>Selection of Graduate Courses</b>	Each request will be handled individually
<b>Standard Full Time Load</b>	15-20 credits per semester (1 credit = 1 <u>semester</u> hour of frontal study).
<b>Faculties and Program of Study</b>	<a href="#">RIS Undergraduate</a> / <a href="#">RIS Graduate</a> / <a href="#">Faculties Graduate</a>
<b>Course List Available for Exchange Students*</b>	<a href="#">University faculty courses</a> (English) <a href="#">University faculty courses</a> (Hebrew) <a href="#">RIS Undergraduate</a> (English) <a href="#">RIS Graduate</a> (English) *We highly encourage exchange students to enroll in both courses taught in university faculties and RIS courses. <a href="https://international.huji.ac.il/book/exchange-programs">https://international.huji.ac.il/book/exchange-programs</a>



# EXCHANGE STUDENTS INFORMATION SHEET

## Semester Information

<b>Semester System</b>	Two
<b>Semester Dates (including Exam Periods)</b>	October- February / March - July
<b>Academic Calendar</b>	<a href="#">RIS Undergraduate</a> / <a href="#">RIS Graduate</a> / <a href="#">University*</a> Please note that there is a difference in the academic calendar of RIS Undergraduate program and the University academic calendar. Undergraduate students should take into consideration that, if they wish to take courses both at RIS and at faculties, their semester might be extended for an additional month.

## Housing, Costs, Useful Information

<b>On-campus Housing Offered by the University</b>	Information <a href="#">here</a>
<b>Off Campus Accommodation</b>	If looking for off campus private accommodation, Information <a href="#">here</a>
<b>Approximate Living Costs</b>	Information <a href="#">here</a>
<b>Insurance</b>	Information <a href="#">here</a> . In case a student purchases insurance independently, s/he must submit the Health Insurance Waiver form.
<b>Visa Requirements</b>	Information <a href="#">here</a>
<b>Useful Websites</b>	<a href="#">Pre- departure Information</a> <a href="#">Information about Jerusalem</a>